

Queensland's significant mineral mines, advanced mineral projects and new intersections

July 2016

Industry update

Queensland is Australia's and one of the world's largest producers of lead (2nd) zinc (3rd), and silver (5th), and in Australia for copper (2nd) and bauxite (2nd). The North West Queensland Mineral Province dominates base metal production and is a major gold and phosphate rock producer.

North Queensland produces bauxite and silica sand, and highly prospective for base metals, gold, tin and tungsten.

Industrial minerals produced in Queensland include bentonite, kaolin and ceramic clays, diatomite, dimension stone, dolomite, feldspar, gypsum, limestone, lump silica, magnesite, mineral sands (rutile, ilmenite and zircon), perlite, salt and zeolite.

Queensland's significant mineral mines are listed in Table 1 and their locations are shown in Figure 1.

Significant opportunities still await with large unexplored potential within the sedimentary basins and basement beneath cover.

The Queensland Government recognises the pivotal role mining plays in the State's economy now and in the future. With exploration success critical to the sector's sustainability, the provision of pre-competitive geoscience data through the Geological Survey of Queensland reduces uncertainty and ensures direct support for exploration activities.

New geological and geophysical data have been acquired in greenfield and under-explored areas of Queensland, and funding grants have been provided direct to industry to drill innovative conceptual targets. To date, 78 projects by 55 companies have been completed with \$6.45 million paid with 1 in 2 projects identifying mineralisation that increases both the inventory and investment attractiveness of the State.

Current projects anticipated to come into production are:

- CuDECO Ltd – Rocklands' copper-cobalt project
- MMG Ltd – Dugald River deposit. Dugald River is one of the largest and highest-grade known undeveloped deposits of zinc, lead and silver in the world with an estimated 28 year mine life from an underground mine with a production rate of 1.5 Mtpa.
- Altona Mining Ltd – Large low grade copper project at Roseby adjacent to Dugald River.
- Australian New Agribusiness and Chemical Group Ltd – Executed a sales contract for mining the Korella phosphate deposit near the Phosphate Hill mine.
- Rio Tinto Alcan – Amrun bauxite mine near Weipa (previously known as South of Embley) securing bauxite supply for the foreseeable future.
- Gulf Alumina Ltd – Skardon River bauxite project with an expected mine life of 10 years and a construction period of approximately 1 year.
- Metallica Minerals Ltd – Mineral sands deposit and a bauxite deposit at Urquhart Point with potential for production in 2017.
- Resolute Mining Ltd – Ravenswood extension project in eastern Queensland which could result in ongoing mining at Ravenswood beyond the scheduled closure of the Mount Wright mine about March 2017.

Quick facts

Concentrate or contained metal production

(Department of Natural Resources and Mines data, 2014–15)

Copper	250 000 t
Silver	1240 t
Lead	426 000 t
Zinc	966 000 t
Gold	17.0 t
Bauxite (mineral)	27.4 Mt

Queensland produces

(Bureau of Resources and Energy Economics data, 2014–15 and US Geological Survey data)

Australia's copper	30% (1.5% global)
Australia's silver	70.5% (5.6% global)
Australia's lead	66% (8.9% global)
Australia's zinc	63% (7.4% global)
Australia's gold	6% (0.6% global)
Australia's bauxite	34% (11.2% global)

Locality maps and contact details for Queensland's significant mineral mines, advanced mineral projects and new intersections are on pages 2–7.

- Red River Resources Ltd – Thalanga is estimated to commence production within six months of a decision to mine.
- Consolidated Tin Mines – Positive definitive feasibility study completed on the Gillian deposit and is expanding it to include the Pinnacles deposit.
- Carbine Resources Limited – Feasibility study at Mount Morgan to produce gold copper sulphate and a pyrite concentrate from the tailings.
- Mantle Mining Corporation – To re-commence gold mining at Norton near Calliope during the first half of 2016.

These and additional advanced projects and Queensland's major mines are listed in this brochure, as well as the location of interesting new drill intersections (Table 2 and Figures 2 and 3).

For 2014–15, an estimated \$108.9 million was spent on mineral exploration in Queensland of which \$41.9 million was spent on copper exploration; \$43.2 million was spent on gold exploration; and \$23.8 million on other minerals.

The new discoveries and interesting drill intersections demonstrate that Queensland, particularly the north west, remains an ideal location for further mineral discoveries as the industry looks to sustain its future.

Table 1: Queensland's significant minerals mines

Project	Resource	Location	Principal contact
1. Bajool (Ulam) (Care and maintenance)	Limestone	50 km south south-east of Rockhampton www.omya.com.au	Omya Australia Pty Ltd ph: +61 7 4934 6233 fax: +61 7 4934 6299
2. Balcooma/Mount Garnet	Copper, Zinc, Lead, Silver, Gold	130 km south south-west of Mount Garnet/at Mount Garnet www.csdtin.com.au	Consolidated Tin Mines Limited ph: +61 7 4032 3319 fax: +61 7 4027 9429
3. Brolga	Nickel	50 km north of Rockhampton www.qni.com.au	Queensland Nickel Group ph: +61 7 4720 6200 fax: +61 7 4720 6251
4. Calliope	Limestone	30 km south of Gladstone www.sibelco.com.au	Sibelco Australia Limited ph: +61 7 3909 4500 fax: +61 7 3909 4501
5. Cannington	Silver, Lead, Zinc	140 km south south-east of Cloncurry www.south32.net	South 32 Limited – Cannington ph: +61 7 4769 2100 fax: +61 7 4769 2222
6. Cape Flattery	Silica sand	220 km north of Cairns www.cfsm.com.au	Cape Flattery Silica Mines Pty Ltd ph: +61 7 4051 5099 fax: +61 7 4051 8960
7. Chillagoe	Marble	Environs of Chillagoe www.cairnsmarble.com	Cairns Marble ph: +61 7 4035 2211 fax: +61 7 4035 2212
8. Charters Towers (Under development)	Gold, Silver	Charters Towers www.citigold.com	Citigold Corporation Limited ph: +61 7 4787 8300 fax: +61 7 4787 8600
9. Cracow	Gold, Silver	3 km west of Cracow www.evolutionmining.com.au	Evolution Mining Limited ph: +61 7 4750 0200 fax: +61 7 4750 0299
10. Dugald River	Zinc, Lead, Silver	65 km north west of Cloncurry www.mmg.com	MMG Limited ph: +61 3 9288 0888 fax: +61 3 9288 0800
11. East End	Limestone, Clay	30 km west of Gladstone www.cemaust.com.au	Cement Australia Pty Ltd ph: +61 7 4970 2200 fax: +61 7 4970 2224
12. Eloise	Copper, Gold	60 km south east of Cloncurry www.fmrinvestments.com.au	FMR Investments Pty Ltd ph: +61 8 6216 5400 fax: +61 8 6216 5499
13. Enterprise	Rutile, Ilmenite, Zircon	50 km east of Brisbane – North Stradbroke Island www.sibelco.com.au	Sibelco Australia Limited ph: +61 7 3909 4500 fax: +61 7 3909 4501
14. Ernest Henry	Copper, Gold,	38 km north east of Cloncurry www.glencore.com	Glencore plc ph: +61 7 4769 4500 fax: +61 7 4769 4555
15. George Fisher/Handlebar Hill	Zinc, Lead, Silver	19 km north of Mount Isa www.glencore.com	Glencore plc ph: +61 7 4744 2011 fax: +61 7 4744 6637
16. Goondicum (Care and maintenance)	Ilmenite, Feldspar, Apatite, Titanomagnetite	110 km south of Gladstone www.meliordesources.com	Melior Resources Inc ph: +61 7 3233 6300 fax: +61 7 3233 6330
17. Korella (Under development)	Phosphate rock	5 km south of Phosphate Hill www.apollofertiliserqld.com.au	Australia New Agribusiness & Chemical Group Ltd ph: +61 7 3711 2287
18. Kunwarara	Magnesite	60 km north west of Rockhampton www.qmag.com.au	Queensland Magnesite Pty Ltd ph: +61 7 4920 0200 fax: +61 7 4936 1380
19. Lady Annie	Copper (cathode)	100 km north north-west of Mount Isa www.cstmining.com	CST Mining Group Limited ph: +61 3 8644 1300 fax: +61 3 9620 5444
20. Lady Loretta (Care and maintenance)	Zinc, Lead, Silver	115 km north north-west of Mount Isa www.glencore.com	Glencore plc ph: +61 7 3295 7586 fax: +61 7 3295 7666
21. Leichhardt	Copper (cathode)	110 km north north-east of Mount Isa www.capelam.com.au	Malaco Mining Sdn Bhd ph: +61 7 4742 5188
22. Lighthouse	Lump quartz	67 km north east of Georgetown www.ssrq.com.sg	Solar Silicon Resources Group Pty Ltd ph: +61 3 9008 6388
23. Lorena (Under development)	Gold	15 km east of Cloncurry www.malachite.com.au	Malachite Resources Limited ph: +61 2 9411 6033 fax: +61 2 9411 6066
24. Merlin (Care and maintenance)	Molybdenum, Rhenium	100 km south of Cloncurry www.inovaresources.com	Chinova Resources Limited ph: +61 3 9090 8800 fax: +61 3 9090 8899
25. Miles	Bentonite	30 km north of Miles www.sibelco.com.au	Sibelco Australia Limited ph: +61 7 3909 4500 fax: +61 7 3909 4501
26. Mount Carbine (Care and maintenance)	Tungsten	90 km north west of Cairns www.carbinetungsten.com.au	Carbine Tungsten Limited ph: +61 7 4052 2444 fax: +61 7 4052 2400
27. Mount Carlton	Gold	45 km north west of Collinsville www.evolutionmining.com.au	Evolution Mining Limited ph: +61 7 4750 0200 fax: +61 7 4750 0299
28. Mount Colin (Care and maintenance)	Copper	50 km west of Cloncurry www.copperchem.com.au	CopperChem Limited ph: +61 7 4742 1344 fax: +61 7 4742 1688
29. Mount Gordon (Care and maintenance)	Copper	115 km north of Mount Isa www.adityabirlaminerals.com	Lighthouse Minerals Pty Ltd ph: +61 7 3367 8090
30. Mount Isa/Black Star	Copper, Zinc, Lead, Silver	Mount Isa www.glencore.com	Glencore plc ph: +61 7 4744 2011 fax: +61 7 4744 3731
31. Mount Moss (Care and maintenance)	Magnetite	105 km west north-west of Townsville www.curtainbros.com.au	Curtain Bros (Qld) Pty Ltd ph: +61 7 4750 6222 fax: +61 7 4750 6209
32. Mount Rawdon	Gold, Silver	80 km west south-west of Bundaberg www.evolutionmining.com.au	Evolution Mining Limited ph: +61 7 4750 0200 fax: +61 7 4750 0299
33. Mount Ruby	Magnetite	18 km west north-west of Ravenshoe	Developed Iron Ore Pty Ltd ph: +61 4 7721 7691
34. Osborne/Kulthor	Copper, Gold	150 km south of Cloncurry www.inovaresources.com	Chinova Resources Limited ph: +61 3 9090 8800 fax: +61 3 9090 8899

Table 1: Queensland's significant minerals mines

(continued)

Project	Resource	Location	Principal contact
35. Pajingo	Gold, Silver	60 km south south-east of Charters Towers www.evolutionmining.com.au	Evolution Mining Limited ph: +61 7 4750 0200 fax: +61 7 4750 0299
36. Phosphate Hill	Phosphate rock	140 km south south-east of Mount Isa www.incitecpivot.com.au	Incitec Pivot Limited ph: +61 7 4727 0001 fax: +61 7 4727 0092
37. Port Alma	Salt	40 km south east of Rockhampton www.cheethamsalt.com.au	CK Life Sciences International (Holdings) Inc ph: +61 7 4935 2900 fax: +61 7 4934 6308
38. Ravenswood/Mount Wright	Gold, Silver	95 km south of Townsville www.resolute-ltd.com.au	Carpentaria Gold Pty Ltd ph: +61 7 4752 3100 fax: +61 7 4752 3131
39. Rocklands	Copper, Cobalt, Magnetite, Gold	17 km west north-west of Cloncurry www.cudeco.com.au	CuDeco Limited ph: +61 7 5503 1955 fax: +61 7 5503 0288
40. Tartana (Care and maintenance)	Copper (sulphate)	40 km north west of Chillagoe not available at time of publication	Solomons Mines ph: +61 7 4094 8377 fax: +61 7 4094 8399
41. Urquhart Point (Under development)	Zircon, Rutile, Ilmenite, Bauxite	3 km south west of Weipa www.metallicminerals.com.au	Oresome Australia Pty Ltd ph: +61 7 3249 9300 fax: +61 7 3249 3001
42. Warwick/Riverton	Limestone	20 km south east of Warwick and 105 km south south-east of Warwick www.sibelco.com.au	Sibelco Australia Limited ph: +61 7 3909 4500 fax: +61 7 3909 4501
43. Weipa/Andoom/Ely/Amrun	Bauxite	Weipa www.riotintoalcan.com	Rio Tinto Aluminium ph: +61 7 3867 1711 fax: +61 7 3218 3555
44. Wirralie	Gold	26 km north north-west of Mount Coolon	Solomons Mines ph: +61 4 57 303 858
45. Wolfram Camp	Tungsten, Molybdenum	90 km south west of Cairns www.almonty.com	Almonty Industries Inc. ph: +61 7 4093 6005 fax: +49 6221 87100 22

Figure 1: Queensland's significant mineral mines locality map

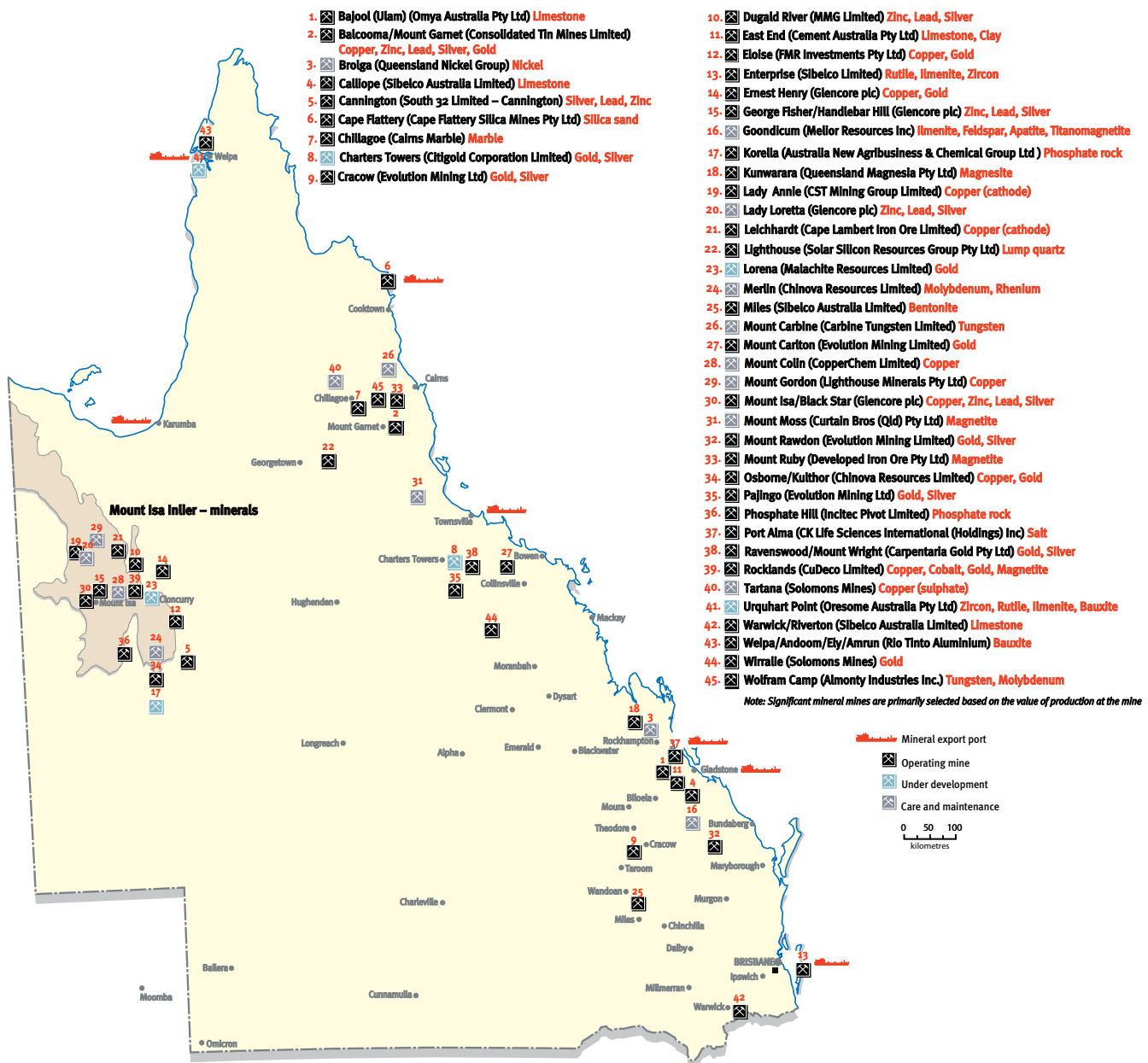


Table 2: Queensland's advanced base metals, other minerals, gold and uranium projects

Project	Resource	Location	Principal contact
1. Barbara	Copper	50 km north east of Mount Isa www.syndicatedmetals.com.au	Syndicated Metals Limited ph: +61 8 9380 9440 fax: +61 8 9380 9449
2. Einasleigh	Copper, Lead, Zinc	Einasleigh www.csdtin.com.au	Consolidated Tin Mines Limited ph: +61 7 4032 3319 fax: +61 7 4027 9429
3. Kalman	Copper, Molybdenum, Rhenium, Gold	60 km south east of Mount Isa www.hammermetals.com.au	Hammer Metals Limited ph: +61 8 9271 0149 fax: +61 8 9271 0149
4. Maronan	Polymetallic	60 km south east of Cloncurry www.redmetal.com.au	Red Metal Limited ph: +61 2 9281 1805 fax: +61 2 9281 5747
5. Mount Dore	Copper, Zinc, Silver	110 km south of Cloncurry www.inovaresources.com	Chinova Resources Limited ph: +61 7 3246 7700 fax: +61 7 3246 7799
6. Mount Isa Open Pit	Copper, Zinc, Lead, Silver	Mount Isa www.glencore.com	Glencore plc ph: +61 7 4744 2011 fax: +61 7 4744 6637
7. Mount Oxide	Copper, Cobalt	120 km north of Mount Isa www.perilya.com.au	Zhongjin Lingnan Mining (HK) Company Limited ph: +61 8 6330 1000 fax: +61 8 6330 1099
8. Pegmont	Lead, Zinc, Silver	28 km west of Cannington Mine www.vendettaminingcorp.com	Vendetta Mining Corporation ph: +1 604 484 7855 fax: +1 604 484 7155
9. Roseby	Copper, Gold	66 km north west of Cloncurry www.altonamining.com	Altona Mining Limited ph: +61 8 9485 2929 fax: +61 8 9486 8700
10. Swan/Mount Elliott	Copper, Gold	95 km south of Cloncurry www.inovaresources.com	Chinova Resources Limited ph: +61 7 3246 7700 fax: +61 7 3246 7799
11. Walford Creek	Polymetallic	135 km west of Burketown www.aeonmetals.com.au	Aeon Metals Limited ph: +61 7 5574 3830
12. Waterloo/Liontown/Thalanga	Polymetallic	60 km south west of Charters Towers www.redriverresources.com.au	Red River Resources Limited ph: +61 3 9017 5380
13. White Range	Copper	40 km south of Cloncurry www.queenslandminingcorporation.com.au	Queensland Mining Corporation Limited ph: +61 7 3503 1020 fax: +61 7 3211 7755
14. Aurukun	Bauxite	120 km south of Weipa www.glencore.com	Glencore plc ph: +61 7 3833 8469
15. Bauxite Hills	Bauxite	95 km north north-east of Weipa www.metromining.com.au	Metro Mining Limited ph: +61 7 3009 8000 fax: +61 7 3221 4811
16. Binjour	Bauxite	20km north west of Gaydah www.australianbauxite.com.au	Australian Bauxite Limited ph: +61 2 9251 7177 fax: +61 2 9251 7500
17. Gillian	Tin	7 km west of Mount Garnet www.consolidatedtinmines.com.au	Consolidated Tin Mines Limited ph: +61 7 4032 3319 fax: +61 7 4027 9429
18. Grafton Range Soda	Sodium bicarbonate	23 km north east of Roma www.aqcltd.com	Australian Pacific Coal Limited ph: +61 7 3221 0670 fax: +61 7 3252 2111
19. Marlborough Nickel	Nickel, Cobalt	80 km north west of Rockhampton, refinery at Gladstone www.gladstonepacific.com.au	Gladstone Pacific Nickel Limited ph: +61 7 3231 7100 fax: +61 7 3231 7199
20. Sconi	Scandium, Nickel, Cobalt,	between Greenvale and Mount Garnet www.metallicaminerals.com.au	Metallica Minerals Limited ph: +61 7 3249 3000 fax: +61 7 3249 3001
21. Paradise North/South	Phosphate rock	110 km north north-west of Mount Isa www.lgdi.net	Legend International Holdings Inc ph: +61 3 8532 2866 fax: +61 3 8532 2805
22. Skardon River	Bauxite	80 km north of Weipa www.gulfalumina.com.au	Gulf Alumina Limited ph: +61 2 9221 4689 fax: +61 2 9221 4686
23. Wateranga	Ilmenite, Feldspar, Apatite, Zircon, Rutile, Corundum, Magnetite, Scandium	70 km south west of Bundaberg www.qim.com.au	Queensland Industrial Minerals Limited ph: +61 7 5574 0833 fax: +61 7 5574 0933
24. Watershed	Tungsten	140 km north west of Cairns www.vitalmetals.com.au	Vital Metals Limited ph: +61 8 9388 7742 fax: +61 8 9388 0804
25. Agate Creek	Gold, Silver	80 km south of Georgetown www.rcm.com.au	Laneway Resources Ltd ph: +61 7 3108 3500 fax: +61 7 3108 3501
26. Hadleigh Castle	Gold	27 km west of Ravenswood	Denjim Pty Ltd ph: +61 7 4036 0050
27. Mount Coolon/Yandan	Gold	Several deposits within 10 km of Mount Coolon www.gbmr.com.au	GBM Resources Ltd ph: +61 8 9316 9100 fax: +61 8 9315 5475
28. Mount Morgan Tailings	Gold	38 km south west of Rockhampton www.carbineresources.com.au	Carbine Resources Limited ph: +61 8 6142 0986 fax: +61 8 9388 8824
29. Northcote/Tregoora	Gold, Silver	100 km north west of Cairns	Territory Minerals Pty Ltd c/- UTM Global Pty Ltd ph: +61 7 3112 5268
30. Norton	Gold	100 km south west of Gladstone www.mantlemining.com	Mantle Mining Corporation Limited ph: +61 8 9389 3130 fax: +61 8 9389 3199
31. Red Dome/Mungana	Gold, Copper	130 km west of Cairns www.munganagoldmining.com.au	Mungana Goldmines Ltd ph: +61 7 3835 0800 fax: +61 8 3832 5045
32. Twin Hills/Lone Sister/309 Deposit	Gold, Silver	220 km south south-east of Charters Towers www.evolutionmining.com.au	Evolution Mining Limited ph: +61 7 4750 0200 fax: +61 7 4750 0299
33. Woolgar	Gold, Silver	110 km north of Richmond www.stratmin.com.au	Strategic Minerals Corporation NL ph: +61 8 9388 8399 fax: +61 8 9388 8511
34. Ben Lomond	Uranium	50 km south west of Townsville www.mega uranium.com	Mega Uranium Ltd ph: +61 8 9213 3000 fax: +61 8 9481 7479
35. Westmoreland	Uranium	400 km north west of Mount Isa www.laramide.com	Laramide Resources Ltd ph: +61 7 3831 3407 fax: +61 7 3831 3409
36. Valhalla	Uranium	40 km north west of Mount Isa www.paladinenergy.com.au	Paladin Energy Ltd ph: +61 8 9381 4366 fax: +61 8 9381 4978

Figure 2: Queensland's advanced base metals, other minerals, gold and uranium projects

Queensland's base metals projects

- ① Barbara (Syndicated Metals Limited) **Copper**
- ② Einasleigh (Consolidated Tin Mines Limited) **Copper, Lead, Zinc**
- ③ Kalman (Hammer Metals Limited) **Copper, Molybdenum, Rhenium, Gold**
- ④ Maronan (Red Metal Limited) **Polymetallic**
- ⑤ Mount Dore (Chinova Resources Limited) **Copper, Zinc, Silver**
- ⑥ Mount Isa Open Pit (Glencore plc) **Copper, Gold**
- ⑦ Mount Oxide (Zhongjin Lingnan Mining (HK) Company Limited) **Copper, Cobalt**
- ⑧ Pegmont (Vendetta Mining Corporation) **Lead, Zinc, Silver**
- ⑨ Roseby (Altona Mining Limited) **Copper, Gold**
- ⑩ Swan/Mount Elliott (Chinova Resources Limited) **Copper, Gold**
- ⑪ Walford Creek (Aeon Metals Limited) **Polymetallic**
- ⑫ Waterloo/Liontown/Thalanga (Red River Resources Limited) **Polymetallic**
- ⑬ White Range (Queensland Mining Corporation Limited) **Copper**

Queensland's other metals projects

- ⑭ Aurukun (Glencore plc) **Bauxite**
- ⑮ Bauxite Hills (Metro Mining Limited) **Bauxite**
- ⑯ Binjour (Australian Bauxite Limited) **Bauxite**
- ⑰ Gillian (Consolidated Tin Mines Limited) **Tin**
- ⑱ Grafton Range Soda (Australian Pacific Coal Pty Ltd) **Sodium bicarbonate**
- ⑲ Marlborough Nickel (Gladstone Pacific Nickel Limited) **Nickel, Cobalt**
- ⑳ Sconi (Metallica Minerals Limited) **Scandium, Nickel, Cobalt**
- ㉑ Paradise North/South (Legend International Holdings Inc) **Phosphate rock**
- ㉒ Skardon River (Gulf Alumina Limited) **Bauxite**
- ㉓ Wateranga (Queensland Industrial Minerals Limited) **Ilmenite, Feldspar, Apatite, Zircon, Rutile, Corundum, Magnetite, Scandium**
- ㉔ Watershed (Vital Metals Limited) **Tungsten**

Queensland's gold projects

- ⑵⑤ Agate Creek (Laneway Resources Ltd) **Gold, Silver**
- ⑵⑥ Hadleigh Castle (Denjim Pty Ltd) **Gold**
- ⑵⑦ Mount Coolon/Yandan (GBM Resources Ltd) **Gold**
- ⑵⑸ Mount Morgan Tailings (Carbine Resources Limited) **Gold**
- ⑵⑹ Northcote/Tregoorra (Territory Minerals Pty Ltd c/- UTM Global Pty Ltd) **Gold, Silver**
- ⑵⑺ Norton (Mantle Mining Corporation Limited) **Gold**
- ⑵⑻ Red Dome/Mungana (Mungana Goldmines Ltd) **Gold, Copper**
- ⑵⑿ Twin Hills/Lone Sister/309 Deposit (Evolution Mining Limited) **Gold, Silver**
- ⑶⑰ Woolgar (Strategic Minerals Corporation NL) **Gold, Silver**

Queensland's uranium projects

- ⑶⑴ Ben Lomond (Mega Uranium Ltd) **Uranium**
- ⑶⑵ Westmoreland (Laramide Resources Ltd) **Uranium**
- ⑶⑶ Vathalla (Paladin Energy Ltd) **Uranium**

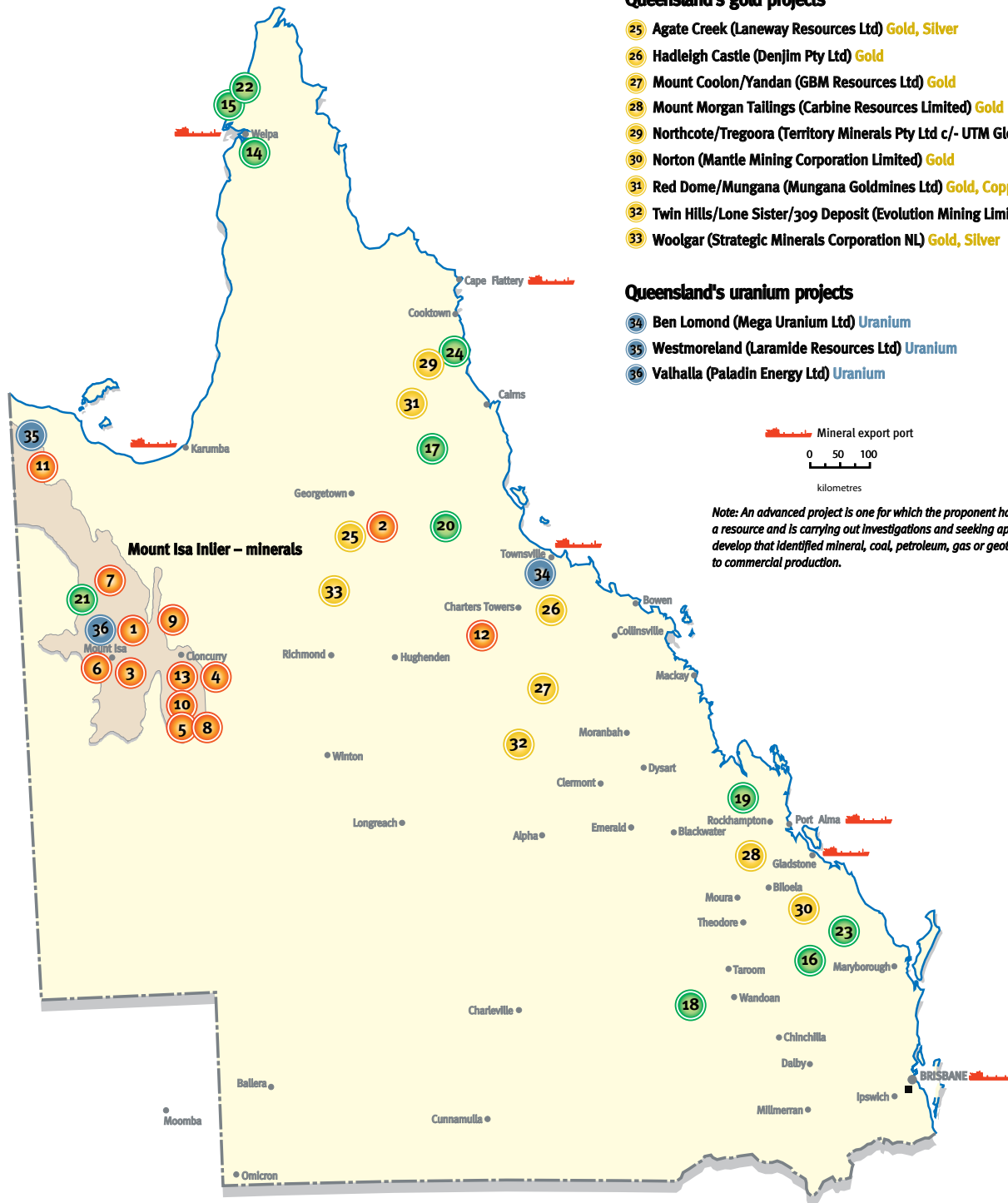
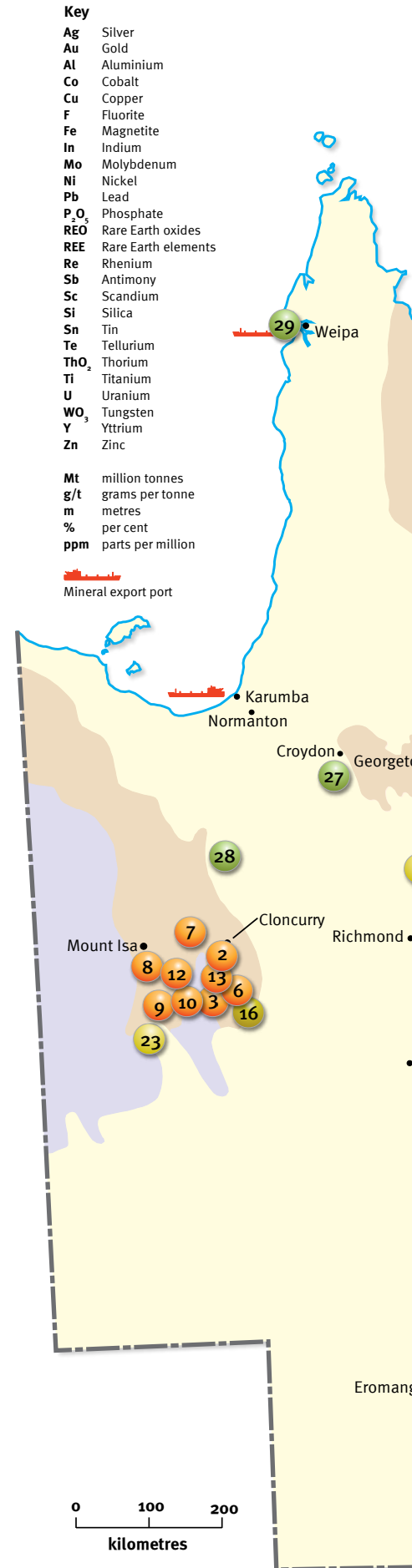


Figure 3: Queensland's new resources and mineral intersections map

1	COALSTOUN Copper
Significant Intersections	
<ul style="list-style-type: none"> 21 m at 0.81% Cu from 15 m 17 m at 0.65% Cu from 42 m 	
Activex Limited www.activex.com.au	
2	COPPER CANYON Copper
Significant Intersections	
<ul style="list-style-type: none"> 37 m at 0.78% Cu, 0.5 g/t Au 976 ppm Co from 54 m including 8 m at 2.27% Cu, 1.61 g/t Au and 1237 ppm Co from 59 m 67 m at 0.52% Cu, 0.24 g/t Au 767 ppm Co from 34 m including 10 m at 0.83% Cu, 1.61 g/t gold and 847 ppm Co from 84 m 	
Queensland Mining Corporation Limited www.qmcl.com.au	
3	DOMAIN 81 Copper, Gold
Significant Intersections	
<ul style="list-style-type: none"> 3 m at 1.3% Cu, 0.8 g/t Au from 216 m 22.4 m at 2.2% Cu, 1.2 g/t Au from 280 m 31 m at 1.9% Cu, 1.2 g/t Au from 383 m 	
Chinova Resources Limited www.inovaresources.com	
4	ESK Copper
Significant Intersection	
<ul style="list-style-type: none"> 12 m at 0.9% Cu 0.1 g/t Au from 300 m 	
Activex Limited www.activex.com.au	
5	KAISER BILL Copper, Gold
Significant Intersections	
<ul style="list-style-type: none"> 11 m at 1.46% Cu 0.29 g/t Au from 29 m 9 m at 1.23% Cu 0.12 g/t Au from 142 m 30 m at 1.03% Cu 0.17 g/t Au from 157 m 24 m at 1.25% Cu 0.28 g/t Au from 201 m 	
Consolidated Tin Mines Ltd www.csdtin.com.au	
6	MEGELLI ZONE Copper, Gold
Significant Intersections	
<ul style="list-style-type: none"> 14 m at 2.2% Cu, 2.9 g/t Au from 108 m 22 m at 0.9% Cu, 0.5 g/t Au from 61 m 15 m at 1.4% Cu, 0.9 g/t Au from 92 m 	
Chinova Resources Limited www.inovaresources.com	
7	NATIVE COMPANION Copper, Gold
Significant Intersections	
<ul style="list-style-type: none"> 12 m at 0.73% Cu, 0.32 g/t Au from 68 m 34 m at 0.75% Cu, 0.21 g/t Au from 54 m 	
Chinalco Yunan Copper Resources Ltd www.cycal.com.au	
8	OVERLANDER NORTH AND SOUTH Copper, Gold
Indicated Resource	
<ul style="list-style-type: none"> 253 000 t at 1.35% Cu, 254 ppm Co 	
Inferred Resource	
<ul style="list-style-type: none"> 1.518 Mt at 1.17% Cu, 476 ppm Co 	
Hammer Metals Limited www.hammermetals.com.au	
9	QUESTION MINE Copper, Gold
Significant Intersections	
<ul style="list-style-type: none"> 18 m at 1.32% Cu, 0.24 g/t Au from 96 m 23 m at 1.42% Cu, 0.19 g/t Au from 61 m 	
Chinova Resources Limited www.inovaresources.com	
10	SLATE RIDGE Copper, Gold
Significant Intersections	
<ul style="list-style-type: none"> 43 m at 4.66% Cu, 1.1 g/t Au from 51 m 29 m at 2.45% Cu, 1.42 g/t Au from 69 m 	
Chinova Resources Limited www.inovaresources.com	
11	THALANGA FAR WEST Polymetallic
Measured Resource	
<ul style="list-style-type: none"> 81 000 t at 1.5% Cu, 1.3% Pb, 4.6% Zn, 0.2g/t Au, 30g/t Ag 	
Indicated Resource	
<ul style="list-style-type: none"> 691 000 t at 1.6% Cu, 1.7% Pb, 5.5% Zn, 0.3g/t Au, 44 g/t Ag 	
Inferred Resource	
<ul style="list-style-type: none"> 873 000 t at 1.9% Cu, 2.3% Pb, 6.6% Zn, 0.2g/t Au, 53 g/t Ag 	
Red River Resources Limited www.redriverresources.com.au	
12	WEE MACGREGOR Copper
Inferred Resource (based on historical data)	
<ul style="list-style-type: none"> 1.65 Mt at 1.6% Cu 	
Argosy Minerals www.argosyminerals.com.au	
13	YOUNG AUSTRALIAN Copper
Significant Intersections	
<ul style="list-style-type: none"> 6 m at 1.07% Cu from 144 m 18 m at 0.51% Cu from 92 m 	
Queensland Mining Corporation Limited www.qmcl.com.au	
14	CHLOE JACKSON Zinc, Lead, Silver
Significant Intersection	
<ul style="list-style-type: none"> 11 m at 4.7% Zn 2.1% Pb and 32.1 g/t Ag from 163 m 	
Consolidated Tin Mines Ltd www.csdtin.com.au	
15	KING VOL NORTH Zinc
Significant Intersections	
<ul style="list-style-type: none"> 33.2 m at 5.6% Zn from 99 m 13 m at 4.6% Zn from 71 m 	
Auctus Chillagoe Pty Ltd www.athertonresources.com.au	
16	MARONAN Lead, Silver with a copper gold zone
Inferred resource	
<ul style="list-style-type: none"> 30.8 Mt at 6.50% Pb and 106 g/t Ag using a 3% lead cut-off grade 	
Inferred resource	
<ul style="list-style-type: none"> 19.2 Mt at 1.24% Cu and 0.6 g/t Au using a 0.5% copper cut-off grade (fresh and weathered) 	
Red Metal Limited www.redmetal.com.au	
17	REDCAP Zinc, Copper
Significant Intersections	
<ul style="list-style-type: none"> 3 m at 20.5% Zn, 2.9% Cu from 289.7 m 5 m at 9.4% Zn, 0.9% Cu from 268.4 m 2.4 m at 13.6% Zn, 1.9% Cu from 212.6 m 3.7 m at 8.7% Zn, 2.1% Cu from 326 m 	
Auctus Chillagoe Pty Ltd www.athertonresources.com.au	
18	AGATE CREEK Gold
Indicated resource	
<ul style="list-style-type: none"> 5.0 Mt at 1.6 g/t Au 	
Inferred resource	
<ul style="list-style-type: none"> 3.2 Mt at 1.2 g/t Au 	
Laneway Resources Limited www.lanewayresources.com.au	
19	CHOUGH Gold
Significant Intersection	
<ul style="list-style-type: none"> 82 m at 0.106 g/t gold from 20 m 	
Orion Gold NL www.oriongold.com.au	



Updated May 2016
 Prepared by Corporate Communications and Geological Survey of Queensland
 © The State of Queensland (Department of Natural Resources and Mines) 2015

Reserve/resources figures and drill intersections quoted and sourced from company information

Disclaimer: This publication has been prepared by officers of the Geological Survey of Queensland and its subsidiaries. This publication is intended to provide information only and does not constitute a recommendation. Further professional advice should be sought before acting on the information contained herein. While all care has been taken in the preparation of this document, neither the Queensland Government nor its officers accept any liability for any inaccuracy or omission in the information contained herein.

20 MOUNT MACKENZIE Gold

Indicated oxide resource

- 0.45 Mt at 1.18 g/t Au and 9 g/t Ag

Inferred oxide resource

- 0.52 Mt at 1.18 g/t gold and 4 g/t Ag

Indicated primary resource

- 0.7 Mt at 1.42 g/t Au and 14 g/t Ag

Indicated primary resource

- 0.7 Mt at 1.37 g/t Au and 5 g/t Ag

Resources and Energy Group Ltd www.rezgroup.com.au

21 PYRAMID Gold

Significant Intersection

- 35 m at 6.1 g/t gold from 33 m including 5 m at 37.1 g/t gold from 33 m
- 34 m at 2.83 g/t gold from 15 m including 15 m at 5.63 g/t gold
- 17 m at 2.46 g/t gold including 3 m at 4.59 g/t gold

MGT Resources Limited www.mgt.net.au

25 WOOLGAR BIG VEIN Gold

Measured Resource

- 0.17 Mt at 2.17 g/t Au

Indicated Resource

- 4.38 Mt at 2.01 g/t Au

Inferred Resource

- 5.69 Mt at 2.03 g/t Au

Strategic Minerals Corporation NL www.stratmin.com.au

22 SOUTH WEST LIMY DAM Gold

Significant Intersection

- 0.71 m at 9.11 g/t gold from 8.9 m

Adelaide Resources Limited www.adelaideresources.com.au

26 DALCOUTH Tin

Measured Resource

- 408 000 t at 0.32% Sn

Indicated Resource

- 87 000 t at 0.24% Sn

MGT Resources Limited www.mgt.net.au

23 TICK HILL TAILINGS Gold

Indicated Resource

- 630 000 t at 1.08 g/t Au

Superior Resources Limited www.superiorresources.com.au

27 ESMERALDA Graphite

Significant Intersections

- 95 m at 6.5% graphite from 71 m
- 29.1 m at 7.8% graphite from 71.9 m

Metallica Minerals Limited www.metallicaminerals.com.au

24 TRIUMPH Gold

Significant Intersection

- 15 m at 10.3 g/t Au from 9m including 4 m at 34.2 g/t from 14 m

Metal Bank Limited www.metalbank.com.au

28 MOUNT DROMEDARY Graphite

Measured, Indicated and Inferred Resource (high grade)

- 4.9 Mt at 18.8% graphite using a 4% cut off grade.

Measured, Indicated and Inferred Resource (medium grade)

- 4.3 Mt at 5.4% graphite using a 4% cut off grade.

Graphitecorp Limited www.graphitecorp.com.au

29 URQUHART Bauxite

Inferred Resource

- 7.5 Mt at 51.0% Al₂O₃, 16.3% SiO₂

Metallica Minerals Limited www.metallicaminerals.com.au



Geological Survey of Queensland and Corporate Communications, Department of Natural Resources and Mines. It may be distributed to other interested parties for information only. It is not intended to, nor does it constitute, expert advice. Readers are warned against relying solely on the information contained in this publication. The Department of Natural Resources and Mines, nor its officers or staff accept any responsibility for any loss or damage that may result from any use of the information.

Mineral exploration and mining tenures in Queensland

All exploration and mining tenures are issued and administered by the Queensland Department of Natural Resources and Mines (DNRM) under the *Mineral Resources Act 1989* and the associated Mineral Resources Regulation 2003.

The three main tenures that are issued in Queensland for mineral exploration and development are listed below.

1. Exploration permit for minerals (EPM)

An EPM allows the holder to conduct mineral exploration activities including geological mapping, exploration drilling and sampling (term up to 5 years and renewable according to performance).

2. Mineral development licence (MDL)

An MDL may be granted after exploration strongly indicates the existence of a resource. This tenure allows the holder to retain control of the resources within the defined area and conduct further testing and bulk sampling as approved by the government (term up to 5 years and renewable according to performance).

3. Mining lease (ML)

An ML allows mining for a specified term, generally up to 35 years commensurate with the proposed scale of mining and the size of the known resource, and is renewable.

MinesOnlineMaps

MinesOnlineMaps is our new GIS system that replaces the Interactive Resource and Tenure Maps (IRTM) system.

MinesOnlineMaps:

- provides you with greater access to view, query and analyse mines spatial information in an integrated, user friendly interface (see Figure 4)

- allows you to zoom, pan, search and display geological data with mining and exploration permit information for the whole of Queensland
- links to Queensland Digital Exploration Reports system (QDEX Reports), allowing you to list company reports for your project area based on historic permits.

MinesOnlineMaps offers more functionality than the old IRTM system, with features including:

- enhancements to support identification, monitoring and reporting of resource activity
- quick and easy assessment of target resource areas by highlighting geographic constraints and barriers
- self-service of publicly available permit and geoscience information.

In September 2014, MinesOnlineMaps customers gained access to improved integrated data downloads using the next-generation spatial information portal QSpatialCatalogue.

Further information:

Manager, Mineral Geoscience
Geological Survey of Queensland
Department of Natural Resources and Mines
PO Box 15216, City East, Queensland 4002
Email: geological_info@dnrm.qld.gov.au

www.dnrm.qld.gov.au

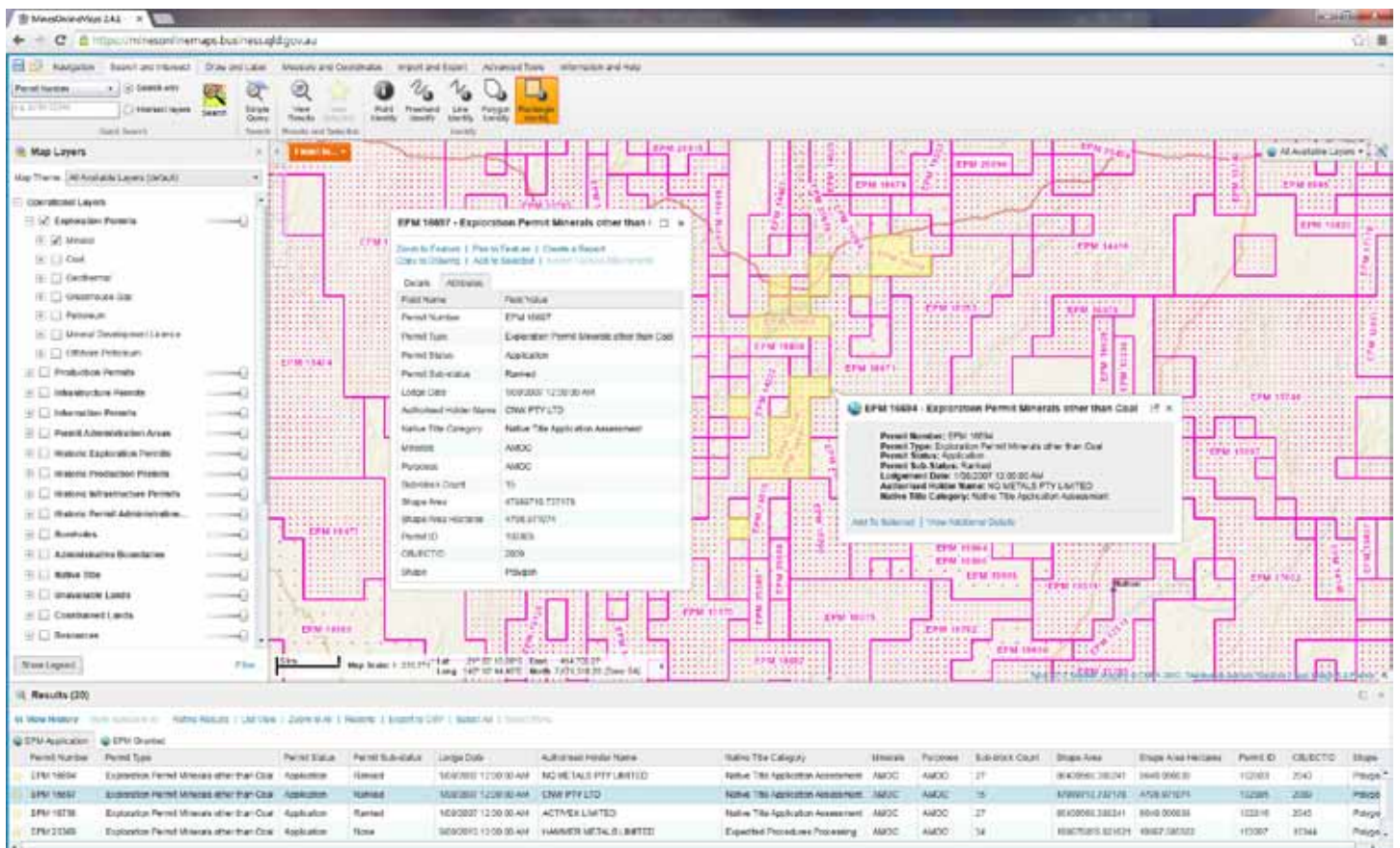


Figure 4: MOM screen image showing mineral exploration and mining tenures in the Mount Isa and Cloncurry region of north west Queensland (August 2014)